



PTM 680

22PK V-TWIN BENZINEMOTOR MET HORIZONTAL AS

PTM 680

CE

EU2

EPA

ACHTERKANT



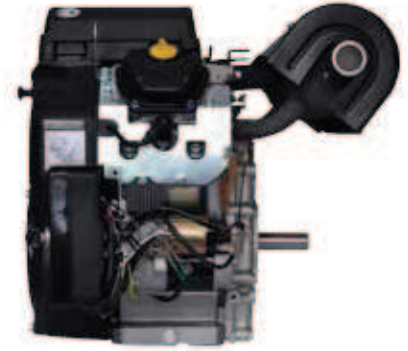
ONDERKANT



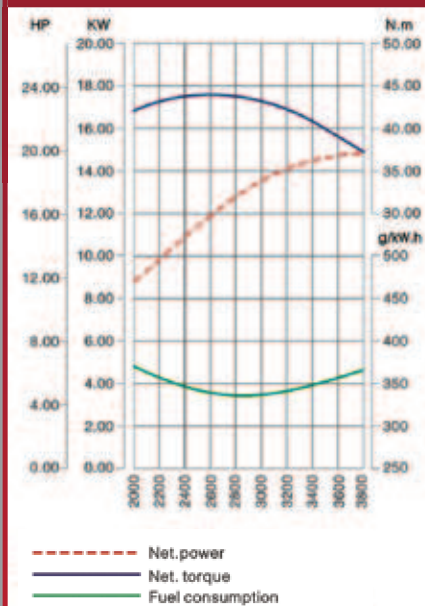
LINKERKANT



RECHTERKANT



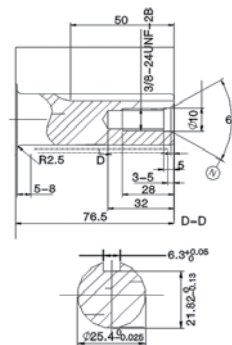
PRESTATIE CURVE



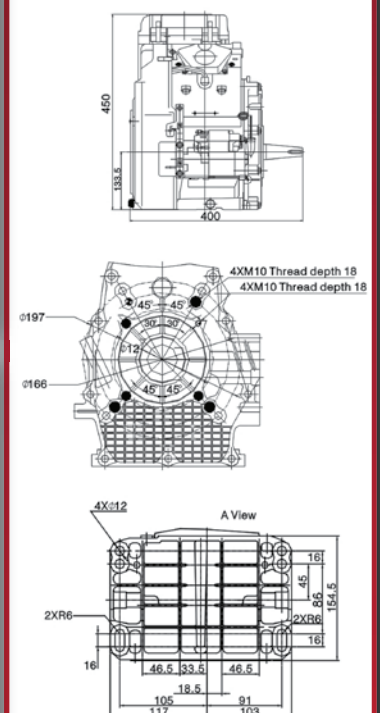
TECHNISCHE SPECIFICATIES

Motortype	V-twin, 4-takt, OHV, luchtkoeling, oliekoeling
Max. vermogen	22PK(16,4kW)/3600rpm
Net. Koppel	43,5Nm/2500rpm
Compressie ratio	8,5 : 1
Boring x Slag	78 x 71 mm
Cilinderinhoud	678 cm ³
Draairichting	Linksom (tegen de klok in)
Ontsteking	TCI
Tankinhoud	n.v.t.
Drooggewicht	43 kg
Motorolie capaciteit	1,5 liter
Afmetingen(LxBxH)	510 x 400 x 450 mm
Startsysteem	E-start
Geluid	70 dBA
Stationair toerental	1500 rpm (±150rpm)

25,4 MM AS



MOTOR



OLIEKOELING

