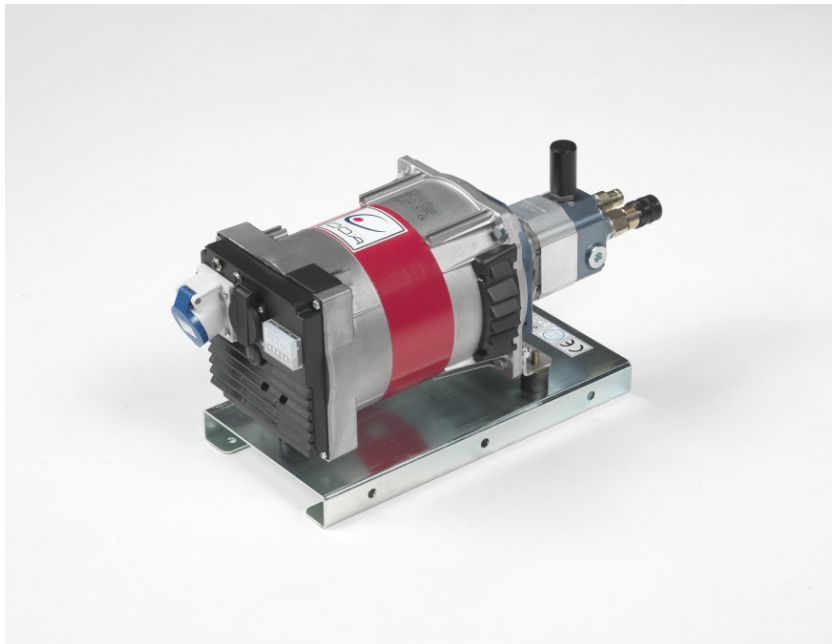




HG 3000 - HG 5000

ELECTRIC GENERATORS WITH HYDRAULIC MOTOR



HG 3000 - HG 5000 are compact hydraulic generators with power respectively of :
 3 KVA and 5 KVA - 230 volt - 50 HZ - AC
 They are ideal used as accessory of mini excavators, earth moving equipment, trucks, sky lifts, cranes, boats, mobile workshops and all machines equipped with sufficient hydraulic circuit. The connection to the machines is easy as the generators are hydraulically self regulated, two flexible hoses are sufficient and in few minutes your machine becomes a powerful generator that can power electric tools of all types, illuminate and also welding, avoiding the presence of gasoline engine generators with their associated problems of starting, maintenance, fuel availability, transport, exhaust fumes and noise.
 HG 3000 - HG 5000 are a high quality products that increase significantly the equipment versatility improving productivity and providing anywhere is necessary low cost and low maintenance electricity.

ADVANTAGES

- NO NOISE EMISSION - NO EXHAUST FUMES AND VIBRATIONS - LONG OPERATIVE LIFE - EXTREMELY LIGHT AND EASY TO TRANSPORT - MAINTENANCE VIRTUALLY INEXISTENT AND LOW RUNNING COSTS
- THE MINIMAL WEIGHT AND DIMENSIONS AND THE RATIONAL BASE CHASSIS ALLOW AN EASY INSTALLATION ON MACHINES
- HIGH QUALITY ALTERNATOR WITH R.C.B.O. PROTECTION, VOLTMETER
- THE EXCLUSIVE SELF REGULATED DOA GEAR MOTOR PROTECTS FROM ERRONEOUS ROTATION AND EXCESS OF FLOW AND SPEED

WEIGHT AND DIMENSIONS

	HG 3000	HG 5000
WEIGHT	25 kg	27 kg
HEIGHT	28 cm	28 cm
LENGTH	60 cm	60 cm
WIDTH	22 cm	22 cm

ELECTRIC CHARACTERISTICS

POWER	3 KVA - 5 KVA
VOLTAGE	230 Volt
FREQUENCY	50 Hz
CIRCUIT PROTECTION	R.C.B.O.
PROTECTION	IP 23

NOTE: DOA produces also generators with higher power or different electric characteristics of voltage /frequency. For special configuration contact DOA.

HYDRAULIC CHARACTERISTICS

	HG 3000	HG 5000
FLOW MIN-MAX	25 - 40 L/min	30 - 40 L/min
IDEAL FLOW	30 l/min	35 l/min
PRESSURE	210 Bar	210 Bar
BACKPRESSURE	max 17 bar	
EHTMA GROUP		



Detail of the exclusive hydraulic motor with integrated control valves