

ORDERING CODES

- 0 ————— Table 3 block with common check valve
- 2 ————— number of spools
- P40 ————— directional control valve type...
- R ————— inlet high pressure - right
- 1 ————— Table 4 way of distribution / parallel or.../
- A ————— Table 5 first spool distribution type
- 1 ————— Table 6 spool control / dedant and etc./
- A ————— second spool distribution type
- 1 ————— spool control / dedant and etc./
- G ————— Table 9 ports / treads /
- KZ1 ————— Table 10 general operation feature
- T ————— with " teton "
- H ————— Table 8 operation feature / pneumatic,.../
- E ————— Table 7 with electric switch
- C2 ————— Table 11 high pressure carry over
- 11 ————— Table 12 connection ports in use

Table 1

	A	B	C	D	P1	P2	T1	T2
P40	60	80	85	60	+	-	+	-
02P40	60	80	129	97	+	+	+	+
03P40	60	80	164	132	+	+	+	+
04P40	60	80	199	167	+	+	+	+
05P40	60	80	234	202	+	+	+	+
06P40	60	80	269	237	+	+	+	+
07P40	60	80	304	272	+	+	+	+
2P40	60	80	129	97	+	+	+	+
3P40	60	80	164	132	+	+	+	+
4P40	60	80	199	167	+	+	+	+

Table 2

spool control	E	F
1; 4; 5; 6; 7; 8; 9; 10; 11;	40	193
2; 3;	72	225
16	+	+

Table 3

code	Number of spools
	1
02, 2	2
03, 3	3

Table 4

code	way of distribution
1	parallel
2	tandem(series parallel)

Table 5

code	spool type
A	
B	
C	
D	
E	
F	
G	
H	
M	
N	
O	
P	
Q	
R	
S	
T	
* K	
** L	

Table 6

code	spool control
1	
2	
3	
4	
5	
6	
7	
8	
9	
10	
11	
* 13	
* 16	
** 13R	
** 12	

Table 7

code	incorporated microswitch	
E		microswitch type Omron-V 165 I C5

Table 8

code	operation feature	
P		on-off pneumatic control; 5-10 bar; ports G1/4
H		on-off hydraulic control; pn = 5-20 bar; ports G1/4

Table 9

code	Ports (threads)			
	P	A ; B	T	N
M	M22x1.5	M18x1.5	M22x1.5	M22x1.5
G	G1/2	G3/8	G1/2	G1/2
S	7/8-14UNF	3/4-16UNF	7/8-14UNF	7/8-14UNF

Table 10

code	feature	code	feature	code	feature
KZ		KY		KI	
KZ1		KY1		KI1	
KZ0		KY0		KI0	
KZ01		KY01		KI01	
-	without hand control				

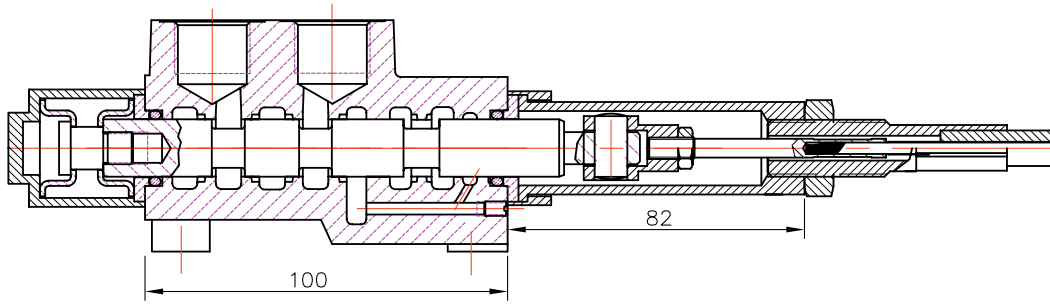
Table 11

code	feature	symbol
C	Closed center	
C1	Part for power beyond sleeve (carry over)	M22x1.5
C2	Part for power beyond sleeve (carry over)	Ø14 mm M22x1.5
-	Without part for pressure carry over	G 1/2
X	Power beyond ever to tank	

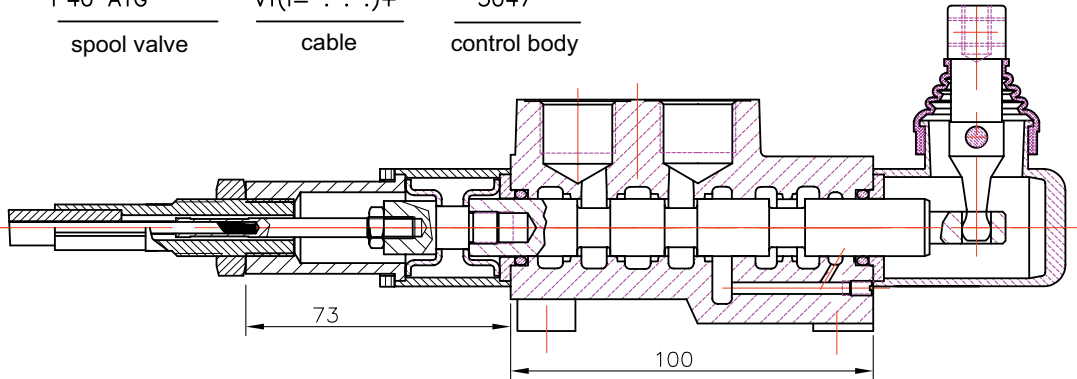
Table 12

code	Used connection ports
11	P1 ; T1
12	P1 ; T2
21	P2 ; T1
22	P2 ; T2

REMOTE CONTROLS

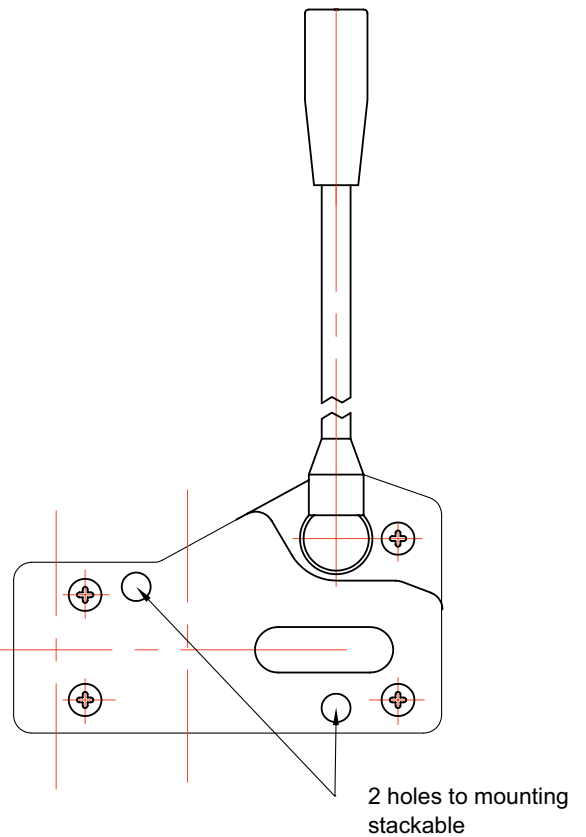


P40 A1G V1(l= . . .)+ 3047
 spool valve cable control body



P40 A1G V2KZ1(l= . . .)+ 3047
 spool valve cable control body

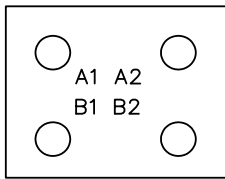
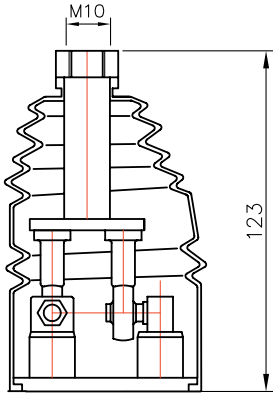
Technical specifications			
	3047	3076	3077
Stroke	13+13 mm	13+13 mm	13+13 mm
Max. load	45 kg	45 kg	45 kg
Level ratio	10:1	10:1	10:1
Lock in neutral	No	No	Yes
Antireverse lock	No	Yes	No
Body colour	Black	Black	Black
Cables type	Heavy Duty	Heavy Duty	Heavy Duty
Operating temperature	-40/+80C	-40/+80C	-40/+80C



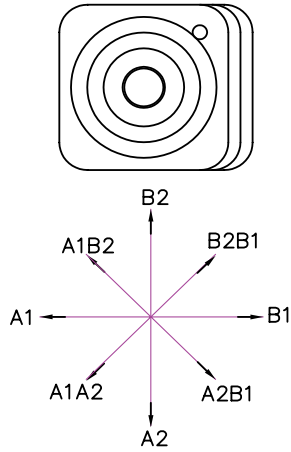
High solidity controls for easy mounting on every type of distributor. They can be mounted stand alone or packed together. They use push-pull heavy duty cables that provide a positive smooth operating lever and are manufactured in three different models to meet different needs of Clients.

JOYSTICK "++"

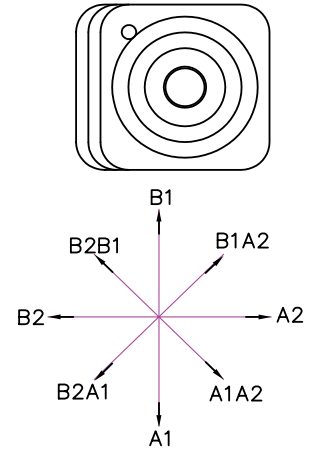
This control gives the possibility to operate, at the same time two spool with a "++" movement



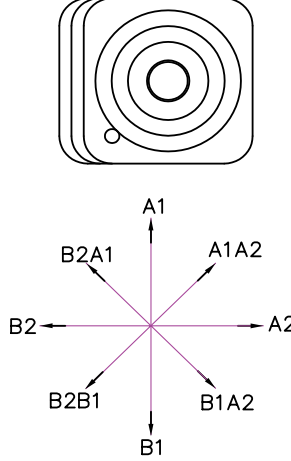
standard version 1



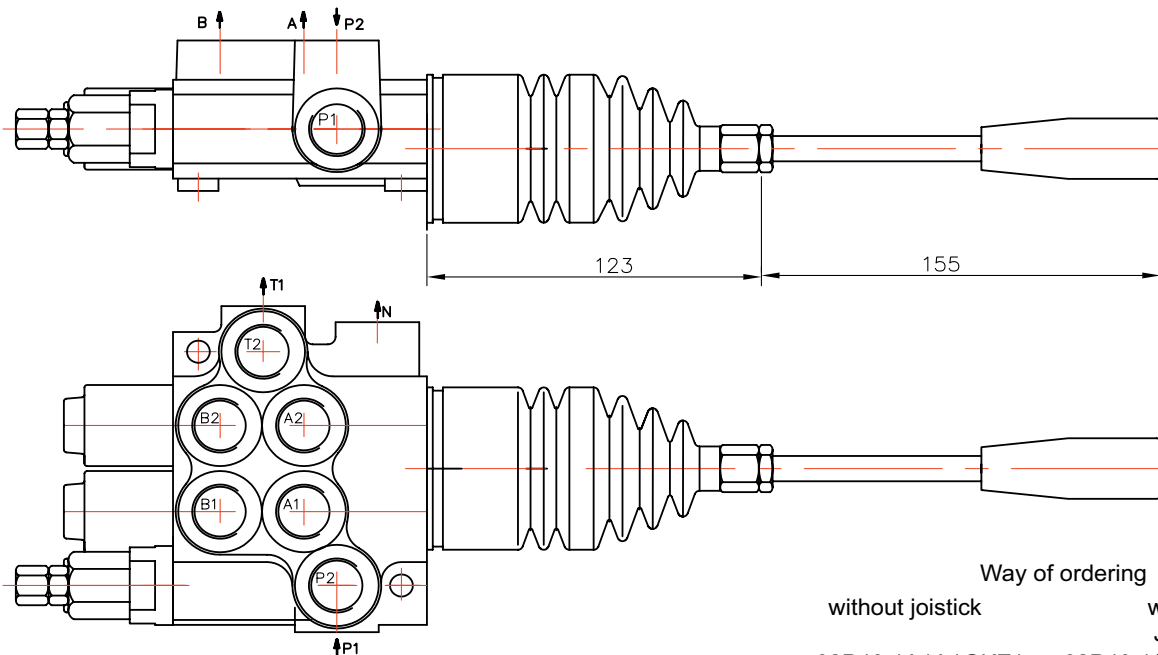
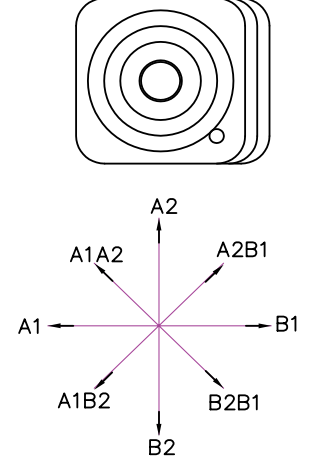
standard version 2



standard version 3



standard version 4



Way of ordering
 without joystick 02P40 1A1A1GKZ1
 with joystick
 Joystick file 02P40 1(A1A1)(js+3)G