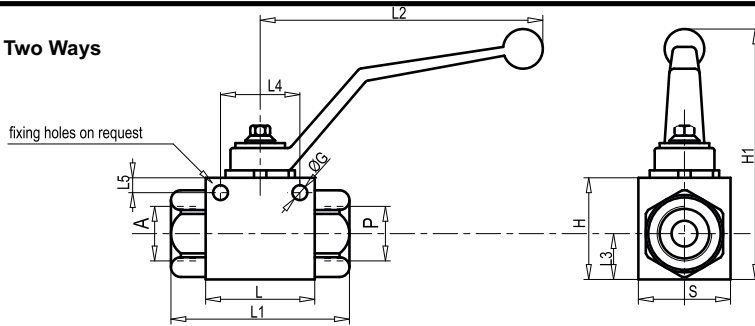
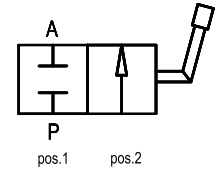
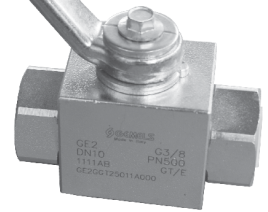


Ball Valves Two Ways

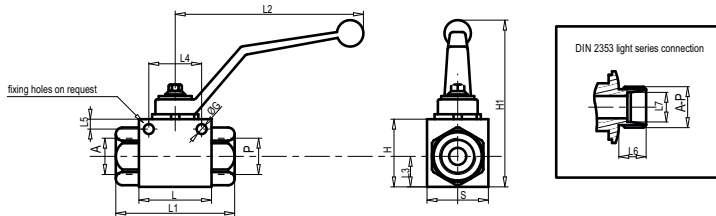


RS 2

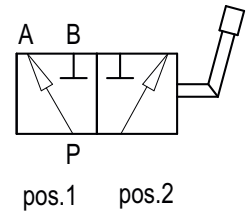


Code Number	Type	Max. Flow	Max. Pressure	L	L1	L2	L3	L4	L5	G	H	H1	S
		Lt./min	Bar	mm	mm	mm	mm	mm	mm	mm	mm	mm	mm
V0830	RS 2 VIE 1/4	25	500	42	71	110	14	25	5	5,5	35	92	30
V0840	RS 2 VIE 3/8	35	500	44	73	110	17	31	5	5,5	40	97	35
V0850	RS 2 VIE 1/2	60	500	48	83	110	18	34	6	6,5	43	100	37
V0860	RS 2 VIE 3/4	100	400	63	95	180	23	46	6	8,5	55	110	45
V0870	RS 2 VIE 1	180	350	67	112	180	29	49	6	8,5	65	120	55

Ball Valves 3 Ways

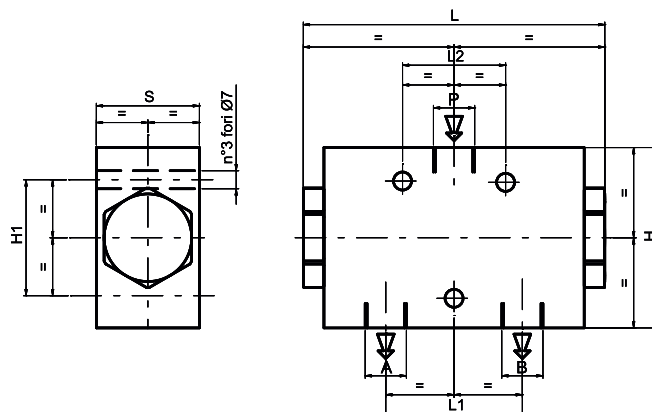


RS 3

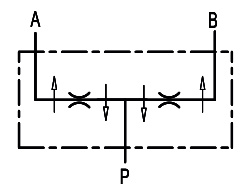
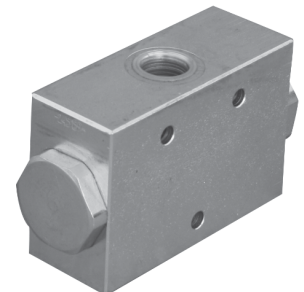


Code Number	Type	Max. Flow	Max..Pressure	A-B P Gas	L	L1	L2	L3	L4	L5	G	H	H1	S	S1
		Lt./min	bar		mm	mm	mm	mm	mm	mm	mm	mm	mm	mm	mm
V0832	RS 3 VIE 1/4"	25	500	G 1/4"	42	71	110	14	25	5	5.5	35	90	30	48.5
V0842	RS 3 VIE 3/8"	35	500	G3/8"	44	73	110	17	31	5	5.5	40	95	35	54
V0852	RS 3 VIE 1/2"	60	500	G1/2 "	48	83	110	18	34	6	6.5	43	98	37	58
V0862	RS 3 VIE 3/4"	100	400	G3/4"	62	95	180	23	46	6	8.5	55	105	45	75
V0872	RS 3 VIE 1"	180	350	G1"	66	112	180	29	49	6	8.5	65	115	55	87
V0873	RS 3 VIE 1 1/4"	180	350	G1-1/4"	66	120	180	29	49	6	8.5	65	115	55	89
V0875	RS 3 VIE 1 1/2"	180	350	G1-1/2"	66	124	180	29	49	6	8.5	65	115	55	89

Steel Flow Divider



DFL...



Code Number	Type	Max. Flow	Nom. Pressure	Max. Pressure	L	L1	L2	H	H1	S
		Lt./min	Bar	Bar	mm	mm	mm	mm	mm	mm
FDC 10-4N-200-3/8	DFL 10-20	10-20	250	300	117	53	40	70	45	40